



CALL-OFF

DELJIT D97A / CALDEL

Message Implementation Guideline

**The detail description of DELJIT / CALDEL D97A message
used for EDI communication
between ŠKODA AUTO a. s. and its suppliers**

Call-offs of vehicle-specific parts for Škoda Part Center



This description is based on UN / EDIFACT documentation. Detailed information you can find in UN / EDIFACT documentation for SYNTAX, DELJIT D.97A and in Odette Standards & Recommendation for GLOBAL DELJIT.

Global features of transmission

Message standard	UN / EDIFACT
Syntax	EDIFACT versn. 2 - DIN/ISO 9735
Data elements	Directory UN/TDED - ISO 7372
Character set	A
Message	CALDEL (Based on EDIFACT DELJIT D.97A)
Škoda Auto subset	CALDSP

The Functions Covered by the Message

DELJIT / CALDEL message is used within process of ordering of spare parts. A call-off of vehicle-specific parts for a unique car, which is identified by VIN number, production number (KennNr.) and production date, is sent from Skoda Part Center.



Reading aid for the segment details report

Group: SQ52		Status: O	Max. Occ.: 10	Tax rates and amounts	
Segment: MOA		Seq. No.: 131 Status: R Counter: 2250	Level: 2 Max. Occ.: 1	Monetary amount	
Name: Taxable amount in invoice currency					
Description of segment:					
UN/EDIFACT		Implementation			
Name	St	Format	St	Format	Use / Comments
MOA					
C516	M		M		
5025	M	an..3	M	an..3	125 = Taxable amount
5004	C	n..35	R	n..15	Taxable Amount
6345	C	an..3	N		not used
6343	C	an..3	N		not used
4405	C	an..3	N		not used
Comment:					
Example: MOA+125:1000'					

Segment group and segment tag

User assigned names for segment groups and segments to express the semantic content.

UN/EDIFACT standard name of the segment

Status and occurrence information for segment groups and segments

Skoda Auto Implementation

Applicable codes

Remarks and comments

Sequential number within the implementation guide

Counter of the segment within the UNSM

Grey-shaded segment groups and segments are usually transmitted by Skoda Auto.

Original status information assigned by the UN/EDIFACT standard is expressed as follows:

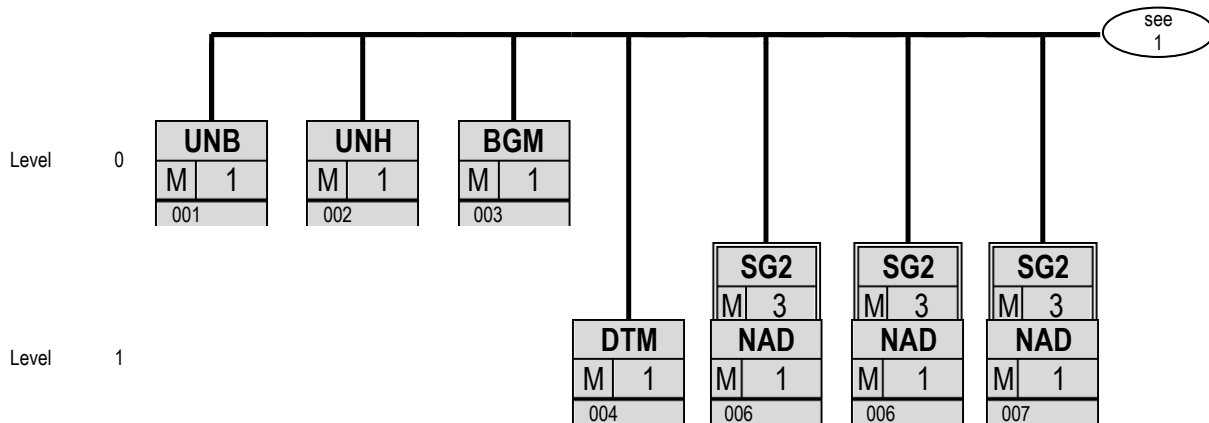
UN/EDIFACT	Implementation	Škoda
Status M	M	mandatory within the scope of next higher hierarchy level (composite data element, segment, segment group, or message)
	N	not used (applies only to component data elements), due to be subordinate to a not-used composite data element this component data element is not used
Status C	R	required within the scope of next higher hierarchy level (composite data element, segment, segment group, or message)
	O	optional within the scope of next higher hierarchy level (composite data element, segment, segment group, or message)
	D	depending; rules are described in the comment
	N	not used

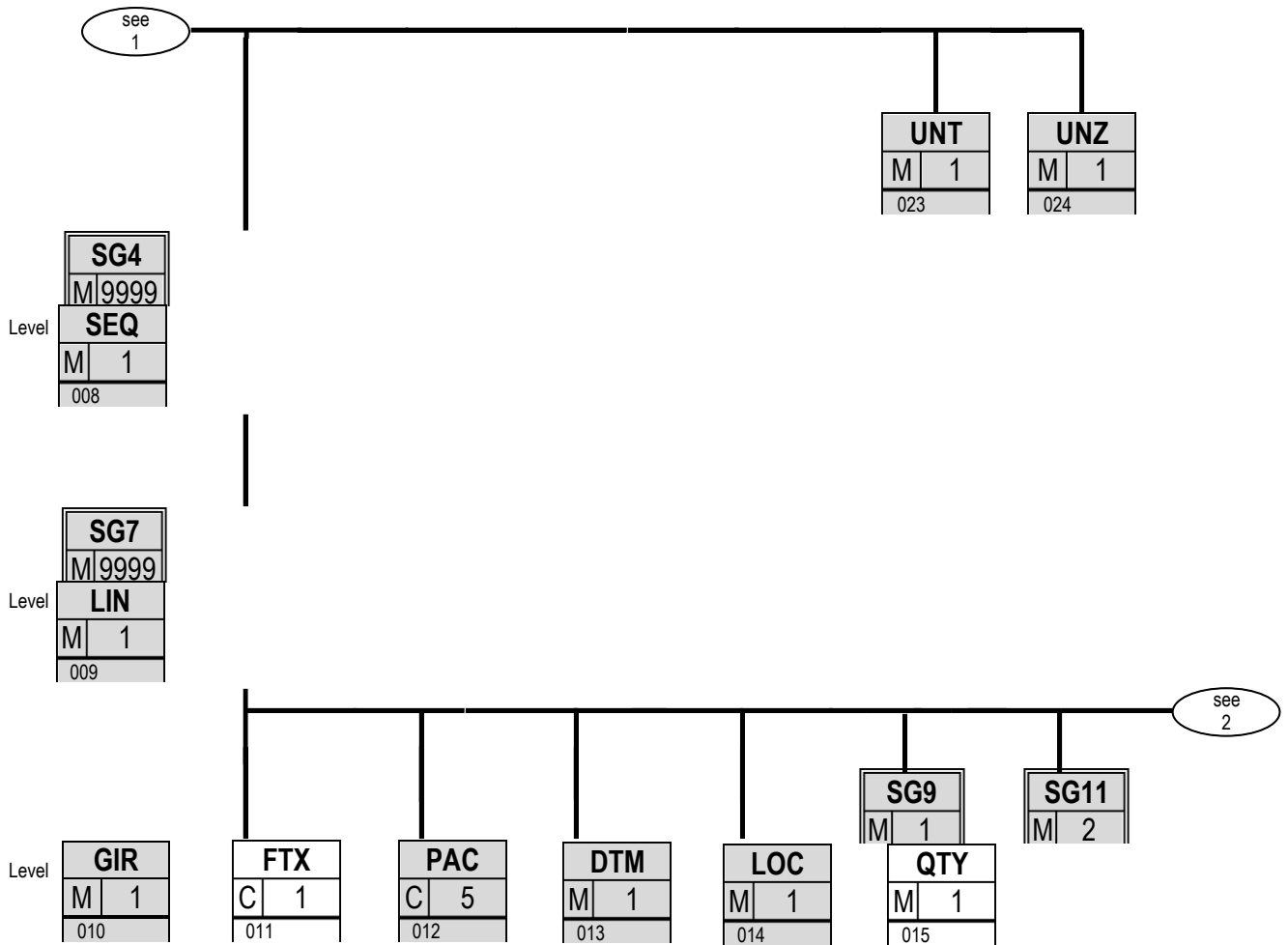

DELJIT/CALDEL – message structure – segments accepted by Skoda Auto

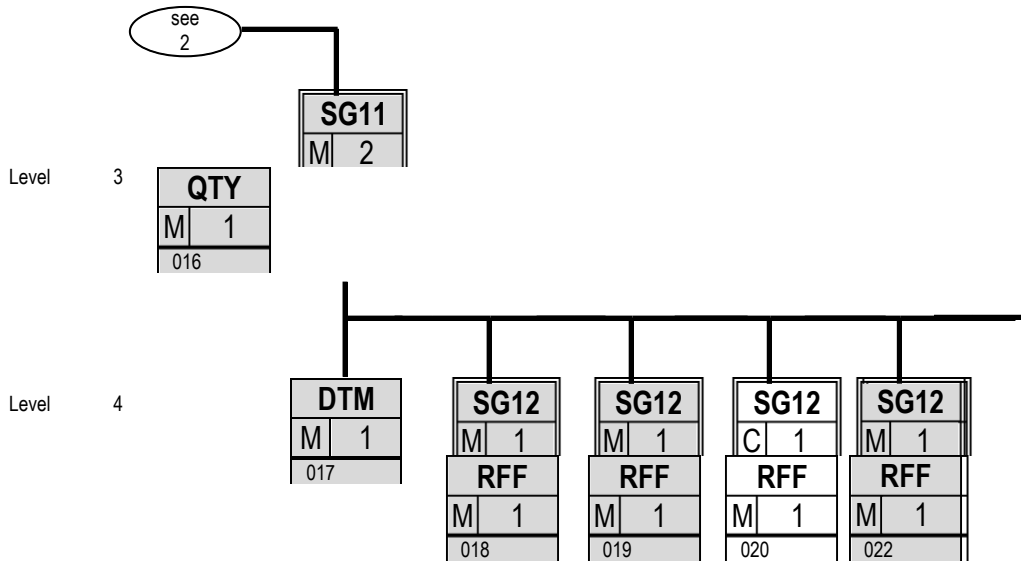
Tag	Seq. No.	St ŠA	Rep.	Content
UNB	1	M	1	INTERCHANGE HEADER
UNH	2	M	1	MESSAGE HEADER
BGM	3	M	1	BEGINNING OF MESSAGE
DTM	4	M	1	MESSAGE DATE
SG2		M	1	NAD
NAD	5	M	1	BUYER
SG2		M	1	NAD
NAD	6	M	1	SUPPLIER
SG2		M	1	NAD
NAD	7	M	1	CONSIGNEE
SG4		M	9999	SEQ-DTM-GIR-LOC-SG7
SEQ	8	M	1	SEQUENCE DETAILS
SG7		M	9999	LIN-GIR-FTX-PAC-SG9-SG11-SG11
LIN	9	M	1	LINE ITEM
GIR	10	R	1 (5)	RELATED IDENTIFICATION NUMBERS
FTX	11	C	1	FREE TEXT
PAC	12	C	1	PACKAGE
DTM	13	R	1	PRODUCTION DATE
SG9		M	10	LOC
LOC	14	R	1 (5)	UNLOADING POINT
SG11		C	1	QTY
QTY	15	M	1	QUANTITY PER PACKAGE
SG11		M	1	QTY-DTM-SG12-SG12-SG12-SG12-SG12
QTY	16	M	1	ORDERED QUANTITY
DTM	17	M	1	DELIVERY DATE
SG12		M	1	RFF
RFF	18	M	1	SAP CALL-OFF NUMBER
SG12		M	1	RFF
RFF	19	M	1	CALL-OFF SEQUENCE NUMBER
SG12		C	1	RFF
RFF	20	C	1	REFERENCE
SG12		C	1	RFF
RFF	21	C	1	REFERENCE
SG12		M	1	RFF
RFF	22	M	1	FRAME CONTRACT NUMBER
UNT	23	M	1	MESSAGE TRAILER
UNZ	24	M	1	INTERCHANGE TRAILER



DELJIT / CALDEL - message structure - branching diagram









Segment: **UNB** Seq. No.: 1 Level: 0 Interchange header
 Status: M Max. Occ.: 1
 Counter:

Name: Interchange header

Description of segment:

UN/EDIFACT			Implementace Škoda		
Name	St	Format	St	Format	Use / Comment
UNB					
S001 SYNTAX IDENTIFIER	M		M		
0001 Syntax identifier	M	a4	M	a4	UNOA = UN/ECE character set A
0002 Syntax version number	M	n1	M	n1	2 = Version 2
S002 INTERCHANGE SENDER	M		M		
0004 Sender identification	M	an..35	M	an..35	00013000001VW R3A Sender's Odette-ID – Škoda Auto (ID contains 6 blanks !)
0007 Partner identification code qualifier	C	an..4	O	an..4	
0008 Address for reverse routing	C	an..14	C	an..14	
S003 INTERCHANGE RECIPIENT	M		M		
0010 Recipient identification	M	an..35	M	an..35	Receiver's Odette ID
0007 Partner identification code qualifier	C	an..4	O	an..4	A qualifier for the recipient identification if Odette ID not used.
0014 Routing address	C	an..14	C	an..14	
S004 DATE/TIME OF PREPARATION	M		M		
0017 Date of preparation	M	n6	M	n6	Creation date of an interchange YYMMDD
0019 Time of preparation	M	n4	M	n4	Creation time of an interchange HHMM
0020 Interchange control reference	M	an..14	M	an..14	Interchange reference number assigned by sender
S005 RECIPIENT'S REFERENCE PASSWORD	C		N		not used
0022 Recipient's reference password	M	an..14	N		not used
0025 Recipient's reference/password qualifi	C	an2	N		not used
0026 Application reference	C	an..14	O	an..14	Name of sender company
0029 Processing priority code	C	a1	N		not used
0031 Acknowledgement request	C	n1	N		not used
0032 Communications agreement ID	C	an..35	N		not used
0035 Test indicator	C	n1	N		not used

Comment:

Example:

UNB+UNOA:2+ 00013000001VW R3A+O093100000875450XX+120323:0910+06844'



Segment:

UNHSeq. No.: 2 Level: 0
Status: M Max. Occ.: 1
Counter:

Message header

Name: Message header / Záhloví zprávy

Description of segment:

UN/EDIFACT		Implementace Škoda		
	Name	St Format	St Format	Use / Comment
UNH				
0062	Message reference number	M an..14	M an..14	Message reference number
S009	Message identifier	M	M	
0065	Message type	M an..6	M an..6	DELJIT = Invoice Message
0052	Message version number	M an..3	M an..3	D = Draft version/UN/EDIFACT Directory
0054	Message release number	M an..3	M an..3	97A = Release 1997 - A
0051	Controlling agency	M an..2	M an..2	UN = UN/CEFACT
0057	Association assigned code	C an..6	R an..6	Subset Identification Number CALDSP = Skoda Subset
0068	Common access reference	C an..35	N	not used
S010	Status of the transfer	C	N	
0070	Sequence of transfers	M n..2	N	not used
0073	First and last transfer	C a1	N	not used

Comment:

Example:

UNH+1+ DELJIT:D:97A:UN:CALDSP'



Segment:

BGM
 Seq. No.: 3 Level: 0
 Status: M Max. Occ.: 1
 Counter:

Beginning of message

Name: Beginning of message

Description of segment:

UN/EDIFACT			Implementace Škoda		
	Name	St Format	St	Format	Use / Comment
BGM					
C002	Document/message name	C	R		
1001	Document name code	C an..3	R	an..3	Message Type, Coded 36 = Přímá odvolávka / Direct Call Off
1131	Code list identification code	C an..3	N		not used
3055	Code list responsible agency code	C an..3	O	an..3	10 = Odette
1000	Document name	C an..35	N		not used
C106	Document/message identification	C	R		
1004	Document identifier	C an..35	R	an..17	Message number (IDoc)
1056	Version identifier	C an..9	O	an..9	Message / guideline version number
1060	Revision identifier	C an..6	O	an..6	Message / guideline revision number
1225	Message function code	C an..3	O	an..3	not used
4343	Response type code	C an..3	N	an..3	not used

Comment:

Example:

BGM+36::10+0000000121835672'



Segment: **DTM** Seq. No.: 4 Level: 1 **Date/time/period**
 Status: M Max. Occ.: 1
 Counter:

Name: **Message date**

Description of segment:

UN/EDIFACT			Implementace Škoda	
	Name	St Format	St Format	Use / Comment
DTM				
C507	Date/time/period	M	M	
2005	Date or time or period function code qualifier	M an..3	M an..3	137 = Document/message date/time
2380	Date or time or period value	C an..35	R n..14	Document/Message Date Time
2379	Date or time or period format code	C an..3	O an..3	203 = CCYYMMDDhhmm

Comment:

Example:

DTM+137: 201203210952:203'



Group: **SG2** Status: R Max. Occ.: 1 NAD

Segment: **NAD** Seq. No.: 5 Level: 1 **Name and address**
 Status: M Max. Occ.: 1
 Counter:

Name: Buyer
Description of segment:

UN/EDIFACT			Implementace Škoda	
	Name	St Format	St Format	Use / Comment
NAD				
3035	Party function code qualifier	M an..3	M an..3	BY = Buyer
C082	Party identification details	C	R	
3039	Party identifier	M an..35	M an..13	Buyer's Identification Number SKODA
1131	Code list identification code	C an..3	N	not used
3055	Code list responsible agency code	C an..3	R an..3	92 = Assigned by buyer or buyer's agent
C058	Name and address	C	O	
3124	Name and address description	M an..35	M an..35	Buyer's Address Line 1
3124	Name and address description	C an..35	O an..35	Buyer's Address Line 2
3124	Name and address description	C an..35	O an..35	Buyer's Address Line 3
3124	Name and address description	C an..35	O an..35	Buyer's Address Line 4
3124	Name and address description	C an..35	O an..35	Buyer's Address Line 5
C080	Party name	C	R	
3036	Party name	M an..35	M an..35	Buyer's Name Line 1
3036	Party name	C an..35	O an..35	Buyer's Name Line 2
3036	Party name	C an..35	N	not used
3036	Party name	C an..35	N	not used
3036	Party name	C an..35	N	not used
3045	Party name format code	C an..3	N	not used
C059	Street	C	R	
3042	Street and number or post office box identifier	M an..35	M an..35	Buyer's Street Line1
3042	Street and number or post office box identifier	C an..35	O an..35	Buyer's Street Line1
3042	Street and number or post office box identifier	C an..35	N	not used
3042	Street and number or post office box identifier	C an..35	N	not used
3164	City name	C an..35	R an..35	Buyer's City
C819	Country sub-entity details	C	O	
3229	Country sub-entity name code	C an..9	O an..9	
1131	Code list identification code	C an..3	N	not used
3055	Code list responsible agency code	C an..3	N	not used
3228	Country sub-entity name	C an..35	N	not used
3251	Postal identification code	C an..17	R an..17	Buyer's ZIP Code
3207	Country name code	C an..3	O a2	Buyer's Country Code Use ISO 3166 two alpha codes. This codelist is documented in a separate document.

Comment:

Example:

NAD+BY+SKODA::92'



Group: **SG2** Status: R Max. Occ.: 1 NAD

Segment: **NAD** Seq. No.: 6 Level: 1 **Name and address**
 Status: M Max. Occ.: 1
 Counter:

Name: Supplier
Description of segment:

UN/EDIFACT			Implementace Škoda	
	Name	St Format	St Format	Use / Comment
NAD				
3035	Party function code qualifier	M an..3	M an..3	CZ = Consignor
C082	Party identification details	C	O	
3039	Party identifier	M an..35	R an5	Supplier number Transmitted incl. leading zeroes without index. The 5-character supplier number must be sent back in the dispatch advice data VDA 4913 (711/4) or DESADV. The plant identifier must be sent back in the dispatch advice data VDA 4913 (712/4) or DESADV.
1131	Code list identification code	C an..3	N	not used
3055	Code list responsible agency code	C an..3	R an..3	92 = Assigned by buyer or buyer's agent
C058	Name and address	C	R	
3124	Name and address	M an..35	M an..35	Supplier's Address Line 1
3124	Name and address	C an..35	O an..35	Supplier's Address Line 2
3124	Name and address	C an..35	O an..35	Supplier's Address Line 3
3124	Name and address	C an..35	O an..35	Supplier's Address Line 4
3124	Name and address	C an..35	O an..35	Supplier's Address Line 5
C080	Party name	C	R	
3036	Party name	M an..35	M an..35	Supplier's Name Line 1
3036	Party name	C an..35	O an..35	Supplier's Name Line 2
3036	Party name	C an..35	N	not used
3036	Party name	C an..35	N	not used
3036	Party name	C an..35	N	not used
3045	Party name format code	C an..3	N	not used
C059	Street	C	O	
3042	Street and number or post office box identifier	M an..35	M an..35	Supplier's Street Line 1
3042	Street and number or post office box identifier	C an..35	O an..35	Supplier's Street Line 2
3042	Street and number or post office box identifier	C an..35	N	not used
3042	Street and number or post office box identifier	C an..35	N	not used
3164	City name	C an..35	O an..35	Supplier's City
C819	Country sub-entity details	C	O	
3229	Country sub-entity name code	C an..9	R an..9	
1131	Code list identification code	C an..3	N	not used
3055	Code list responsible agency code	C an..3	N	not used
3228	Country sub-entity name	C an..35	N	not used
3251	Postal identification code	C an..17	O an..17	Supplier's ZIP Code
3207	Country name code	C an..3	O an..3	Supplier's Country, Code

Comment:

Example:

NAD+CZ+00111::92 '



Group: **SG2** Status: R Max. Occ.: 1 NAD

Segment: **NAD** Seq. No.: 7 Level: 1 **Name and address**
 Status: M Max. Occ.: 1
 Counter:

Name: Consignee

Description of segment:

UN/EDIFACT			Implementace Škoda	
	Name	St Format	St Format	Use / Comment
NAD				
3035	Party function code qualifier	M an..3	M an..3	CN = Consignee
C082	Party identification details	C	O	
3039	Party identifier	M an..35	R an5	Consignee code The 2-character Skoda plant identifier "K3" if the material recipient is Skoda Part Center . Skoda plant identifier must be sent back in VDA 4913 (713/11) or in DESADV.
1131	Code list identification code	C an..3	N	not used
3055	Code list responsible agency code	C an..3	R an..3	92 = Assigned by buyer or buyer's agent
C058	Name and address	C	R	
3124	Name and address	M an..35	M an..35	Consignee's Name – line 1
3124	Name and address	C an..35	O an..35	Consignee's Name – line 2
3124	Name and address	C an..35	O an..35	Consignee 's Address Line 3
3124	Name and address	C an..35	O an..35	Consignee 's Address Line 4
3124	Name and address	C an..35	O an..35	Consignee 's Address Line 5
C080	Party name	C	N	
3036	Party name	M an..35	N	not used
3036	Party name	C an..35	N	not used
3036	Party name	C an..35	N	not used
3036	Party name	C an..35	N	not used
3036	Party name	C an..35	N	not used
3045	Party name format code	C an..3	N	not used
C059	Street	C	O	
3042	Street and number or post office box identifier	M an..35	M an..35	Street - line 1
3042	Street and number or post office box identifier	C an..35	O an..35	Street - line 2
3042	Street and number or post office box identifier	C an..35	N	not used
3042	Street and number or post office box identifier	C an..35	N	not used
3164	City name	C an..35	O an..35	City
C819	Country sub-entity details	C	O	
3229	Country sub-entity name code	C an..9	R an..9	
1131	Code list identification code	C an..3	N	not used
3055	Code list responsible agency code	C an..3	N	not used
3228	Country sub-entity name	C an..35	N	not used
3251	Postal identification code	C an..17	O an..17	ZIP code
3207	Country name code	C an..3	O an..3	Country, coded

Comment:

Example:

NAD+CN+K3+PLANT_NAME1:PLANT_NAME2++PLANT STREET+PLANT_CITY++123 45+CZ'



Group: **SG4** Status: M Max. Occ.: 9999 SEQ-SG7

Segment: **SEQ** Seq. No.: 8 Level: 1 **Sequence details**
 Status: M Max. Occ.: 1
 Counter:

Name: Structure segment for DELJIT

Description of segment:

UN/EDIFACT			Implementace Škoda	
	Name	St Format	St Format	Use / Comment
SEQ 1245	Status indicator, coded	M an..3	M an..3	6 = Agreement

Comment:

No sequence data are transmitted.

Example:

SEQ+6'



Group: **SG4** Status: M Max. Occ.: 9999 SEQ-SG7
Group: **SG7** Status: M Max. Occ.: 9999 LIN-GIR-FTX-PAC-DTM-SG9-SG11
Segment **LIN** Seq. No.: 9 Level: 2 **Line Item**
 Status: M Max. Occ.: 1
 Counter:

Name: Line item
Description of segment:

UN/EDIFACT			Implementace Škoda	
	Name	St Format	St Format	Use / Comment
LIN				
1082	Line item identifier	C an..6	R n..6	Line Item Number
1229	Action request/notification description code	C an..3	N	not used
C212	Item number identification	C	O	
7140	Item identifier	C an..35	R an..35	Buyer's Article Number Part number / article number / VW part number in structured print format (TTT MMM UUU II FFF), blanks at the end of the article number will not be sent. Must be sent back in the dispatch advice data VDA 4913 (714/3).
7143	Item type identification code	C an..3	O an..3	BP = Buyer's part number
1131	Code list identification code	C an..3	N	not used
3055	Code list responsible agency code	C an..3	N	not used
C829	Sub-line information	C	N	
5495	Sub-line indicator code	C an..3	N	not used
1082	Line item identifier	C an..6	N	not used
1222	Configuration level number	C n..2	N	not used
7083	Configuration operation code	C an..3	N	not used

Comment:

Example:

LIN+1++ 3T9 845 209 AA:BP'



Group:	SG4	Status:	M	Max. Occ.:	9999	SEQ-SG7
Group:	SG7	Status:	M	Max. Occ.:	9999	LIN-GIR-FTX-PAC-DTM-SG9-SG11
Segment	GIR	Seq. No.:	10	Level:	3	Related Identification Numbers
		Status:	M	Max. Occ.:	1	
		Counter:				

Name: Related Identification Numbers

Description of segment:

UN/EDIFACT		Implementace Škoda		
	Name	St Format	St Format	Use / Comment
GIR				
7297	Set identification qualifier	M an..3	M an..3	4 = Vehicle reference set
C206	Identification number	M	M	
7402	Identity number	M an..35	M an..17	VIN number Must be sent back in the dispatch advice data VDA 4913 (714/4) or DESADV - Field for supplier part number!).
7405	Identity number qualifier	C an..3	O an..3	VV = Vehicle identity number
C206	Identification number	M	M	
7402	Identity number	M an..35	M an..17	KNR číslo - výrobní referenční číslo Must be sent back in the dispatch advice data VDA 4913 (714/14) or DESADV - Field for batch number!)
7405	Identity number qualifier	C an..3	O an..3	AN = Manufacturing reference number
C206	Identification number	C	O	
7402	Identity number	M an..35	M an..17	Intelligent part code
7405	Identity number qualifier	C an..3	O an..3	AP = Product identification number
C206	Identification number	N	N	not used
7402	Identity number	M an..35	M an..17	
7405	Identity number qualifier	C an..3	O an..3	

Comment:

Example:

GIR+4+TMBGK61ZT98123456:VV+1234567890:AN+123456789:AP'



Group: **SG4** Status: M Max. Occ.: 9999 SEQ-SG7

Group: **SG7** Status: M Max. Occ.: 9999 LIN-GIR-FTX-PAC-DTM-SG9-SG11

Segment **FTX** Seq. No.: 11 Level: 3 **Free text**
 Status: C Max. Occ.: 1
 Counter:

Name: **Free Text**

Description of segment:

UN/EDIFACT			Implementace Škoda	
	Name	St Format	St Format	Use / Comment
FTX				
4451	Text subject code qualifier	M an..3	an..3	PRI = Priority information
4453	Free text function code	C an..3	M	2 = Text replacing missing code
C107	Text reference	C	N	
4441	Free text value code	M an..17	N	not used
1131	Code list identification code	C an..3	N	not used
3055	Code list responsible agency code	C an..3	N	not used
C108	Text literal	C	R	
4440	Free text value	M an..512	M an..17	
4440	Free text value	C an..512	O an..70	
4440	Free text value	C an..512	O an..70	
4440	Free text value	C an..512	O an..70	
4440	Free text value	C an..512	O an..70	
3453	Language name code	C an..3	O an..3	
4447	Free text format code	C an..3	N	not used

Comment:

Example:

FTX+PRI+2+IB'



Group: **SG4** Status: M Max. Occ.: 9999 SEQ-SG7
Group: **SG7** Status: M Max. Occ.: 9999 LIN-GIR-FTX-PAC-DTM-SG9-SG11
Segment **PAC** Seq. No.: 12 Level: 3 **Package**
 Status: C Max. Occ.: 1
 Counter:

Name: **Number of packages**

Description of segment:

UN/EDIFACT			Implementace Škoda	
	Name	St Format	St Format	Use / Comment
PAC				
7224	Package quantity	C n..8	R n..8	Number of packages The number of packages actually used must be sent back in the dispatch advice data VDA 4913 (715/5) or DESADV.
C531	Packaging details	C	N	
7075	Packaging level code	C an..3	N	not used
7233	Packaging related description code	C an..3	N	not used
7073	Packaging terms and conditions code	C an..3	N	not used
C202	Package type	C	N	
7065	Package type description code	C an..17	C an..17	Package type In accordance with Skoda packaging rules. The packaging type actually used, which may differ to that in the delivery instruction, must be indicated in the dispatch advice data VDA 4913 (715/3) or DESADV.
1131	Code list identification code	C an..3	N	not used
3055	Code list responsible agency code	C an..3	N	92 = Assigned by buyer or buyer's agent
7064	Type of packages	C an..35	N	not used
C402	Package type identification	C	N	
7077	Description format code	M an..3	N	not used
7064	Type of packages	M an..35	N	not used
7143	Item type identification code	C an..3	N	not used
7064	Type of packages	C an..35	N	not used
7143	Item type identification code	C an..3	N	not used
C532	Returnable package details	C	N	
8395	Returnable package freight payment responsibility code	C an..3	N	not used
8393	Returnable package load contents code	C an..3	N	not used

Comment:

Example:

PAC+1+++002304::92'



Group:	SG4	Status:	M	Max. Occ.:	9999	SEQ-SG7
Group:	SG7	Status:	M	Max. Occ.:	9999	LIN-GIR-FTX-PAC-DTM-SG9-SG11
Segment	DTM	Seq. No.:	13	Level:	3	Date / Time period
		Status:	M	Max. Occ.:	1	
		Counter:				

Name: Production date

Description of segment:

UN/EDIFACT			Implementace Škoda	
	Name	St Format	St Format	Use / Comment
DTM				
C507	Date/time/period	M	M	
2005	Date or time or period function code qualifier	M an..3	M an..3	94 = Production date
2380	Date or time or period value	C an..35	R n..8	Production date
2379	Date or time or period format code	C an..3	O an..3	Referring to car identification within GIR segment. 102 = CCYYMMDD

Comment:

Example:

DTM+94:20120121:102'



Group:	SG4	Status:	M	Max. Occ.:	9999	SEQ-SG7
Group:	SG7	Status:	M	Max. Occ.:	9999	LIN-GIR-FTX-PAC-DTM-SG9-SG11
Group:	SG9	Status:	C	Max. Occ.:	1	LOC
Segment	LOC	Seq. No.:	14	Level:	3	Place / Location Identification
		Status:	M	Max. Occ.:	1	
		Counter:				

Name: Place of discharge – Final delivery point

Description of segment:

UN/EDIFACT			Implementace Škoda	
	Name	St Format	St Format	Use / Comment
LOC				
3227	Location function code qualifier	M an..3	M an..3	64 = First place/port of discharge
C517	Location identification	C	R	
3225	Location name code	C an..25	R an..5	Unloading point, coded
1131	Code list identification code	C an..3	N	not used
3055	Code list responsible agency code	C an..3	N	92 = Assigned by buyer or buyer's agent
3224	Location name	C an..256	O	Name of unloading point
C519	Related location one identification	C	N	
3223	First related location name code	C an..25	C an..25	not used
1131	Code list identification code	C an..3	N	not used
3055	Code list responsible agency code	C an..3	N	86 = Assigned by party originating the message
3222	First related location name	C an..70	N	not used
C553	Second related location identification	C	N	
3233	Second related location name code	C an..25	N	not used
1131	Code list identification code	C an..3	N	not used
3055	Code list responsible agency code	C an..3	N	not used
3232	Second related location name	C an..70	N	not used
5479	Relation code	C an..3	N	not used

Comment:

Example:

LOC+64+15507::92+NAZEV_SLOZISTE::86'



Group:	SG4	Status:	M	Max. Occ.:	9999	SEQ-SG7
Group:	SG7	Status:	M	Max. Occ.:	9999	LIN-GIR-FTX-PAC-DTM-SG9-SG11
Group:	SG11	Status:	C	Max. Occ.:	2	QTY
Segment	QTY	Seq. No.:	15	Level:	3	Quantity
		Status:	M	Max. Occ.:	1	
		Counter:				

Name: Quantity per pack

Description of segment:

UN/EDIFACT		Implementace Škoda		
	Name	St Format	St Format	Use / Comment
QTY				
C186	Quantity details	M	M	
6063	Quantity type code qualifier	M an..3	M an..3	52 = Quantity per pack
6060	Quantity	M an..35	M n..10	Quantity
				Specification quantity per pack. The actual quantity must be indicated in the dispatch advice data VDA 4913 (715/7) or DESADV.
6411	Measurement unit code	C an..3	O an..3	Measure Unit Specifier
				PCE = pieces

Comment:

Example:

QTY+52:0:PCE'



Group:	SG4	Status:	M	Max. Occ.:	9999	SEQ-SG7
Group:	SG7	Status:	M	Max. Occ.:	9999	LIN-GIR-FTX-PAC-DTM-SG9-SG11
Group:	SG11	Status:	C	Max. Occ.:	2	QTY-DTM-SG12
Segment	QTY	Seq. No.:	16	Level:	3	Quantity
		Status:	M	Max. Occ.:	1	
		Counter:				

Name: Ordered quantity / Objednané množství

Description of segment:

UN/EDIFACT			Implementace Škoda	
	Name	St Format	St Format	Use / Comment
QTY				
C186	Quantity details	M	M	
6063	Quantity type code qualifier	M an..3	M an..3	21 = Ordered quantity
6060	Quantity	M an..35	M n..10	Quantity
				The ordered quantity must be indicated in the dispatch advice data VDA 4913 (714/6) or DESADV.
6411	Measurement unit code	C an..3	O an..3	Measure Unit Specifier
				PCE = pieces

Comment:

Example:

QTY+21:1:PCE'



Group:	SG4	Status:	M	Max. Occ.:	9999	SEQ-SG7
Group:	SG7	Status:	M	Max. Occ.:	9999	LIN-GIR-FTX-PAC-DTM-SG9-SG11
Group:	SG11	Status:	C	Max. Occ.:	2	QTY-DTM-SG12
Segment	DTM	Seq. No.:	17	Level:	3	Date / Time period
		Status:	M	Max. Occ.:	1	
		Counter:				

Name: Delivery date

Description of segment:

UN/EDIFACT			Implementace Škoda	
	Name	St Format	St Format	Use / Comment
DTM				
C507	Date/time/period	M	M	
2005	Date or time or period function code qualifier	M an..3	M an..3	2 = Delivery date
2380	Date or time or period value	C an..35	R n..8	Delivery date
2379	Date or time or period format code	C an..3	O an..3	Date on which the goods should reach the recipient. 102 = CCYYMMDD

Comment:

Example:

DTM+2:20120420:102'



Group:	SG4	Status:	M	Max. Occ.:	9999	SEQ-SG7
Group:	SG7	Status:	M	Max. Occ.:	9999	LIN-GIR-FTX-PAC-DTM-SG9-SG11
Group:	SG11	Status:	C	Max. Occ.:	2	QTY-DTM-SG12
Group:	SG12	Status:	C	Max. Occ.:	5	RFF
Segment	RFF	Seq. No.:	18	Level:	3	Reference
		Status:	M	Max. Occ.:	1	
		Counter:				

Name: SAP order number

Description of segment:

UN/EDIFACT			Implementace Škoda	
	Name	St Format	St Format	Use / Comment
RFF				
C506	Reference	M	M	
1153	Reference function code qualifier	M an..3	R an..3	Document Type Coded
1154	Reference identifier	C an..35	R an..15	ON = Order number (purchase) SAP order number
				The dispatch advice data VDA 4913 (713/8) or DESADV - field for purchase order number - must contain this SAP purchase order number instead of the order/purchase order number from the general contract. The EDI shipping list / dispatch advice to the goods recipient must also indicate the SAP purchase order number.
1156	Document line identifier	C an..6	C n..6	Line number
				The order line item number allows the data recipient to tell whether the defined order line item has already been sent/processed. The dispatch advice data VDA 4913 (714/22) or DESADV - field for original dispatch advice number - must contain the order line item number of the SAP purchase order number and this must also be indicated on the EDI shipping list / dispatch advice sent to the goods recipient.
4000	Reference version identifier	C an..35	C an..35	Order status
				N = newly created item A = change L = deletion
1060	Revision identifier	C an..6	N	not used

Comment:

Example:

RFF+ON:9121210476:000001:N'



Group:	SG4	Status:	M	Max. Occ.:	9999	SEQ-SG7
Group:	SG7	Status:	M	Max. Occ.:	9999	LIN-GIR-FTX-PAC-DTM-SG9-SG11
Group:	SG11	Status:	C	Max. Occ.:	2	QTY-DTM-SG12
Group:	SG12	Status:	C	Max. Occ.:	5	RFF
Segment	RFF	Seq. No.:	19	Level:	3	Reference
		Status:	M	Max. Occ.:	1	
		Counter:				

Name: Call-off sequence number

Description of segment:

UN/EDIFACT			Implementace Škoda	
	Name	St Format	St Format	Use / Comment
RFF				
C506	Reference	M	M	
1153	Reference function code qualifier	M an..3	R an..3	Document Type Coded CG = Call-off number Call-off sequence number
1154	Reference identifier	C an..35	R an..15	
1156	Document line identifier	C an..6	N	not used
4000	Reference version identifier	C an..35	N	not used
1060	Revision identifier	C an..6	N	not used

Comment:

Example:

RFF+CG:1203024'



Group:	SG4	Status:	M	Max. Occ.:	9999	SEQ-SG7
Group:	SG7	Status:	M	Max. Occ.:	9999	LIN-GIR-FTX-PAC-DTM-SG9-SG11
Group:	SG11	Status:	C	Max. Occ.:	2	QTY-DTM-SG12
Group:	SG12	Status:	C	Max. Occ.:	5	RFF
Segment	RFF	Seq. No.:	22	Level:	3	Reference
		Status:	M	Max. Occ.:	1	

Name: Frame contract number

Description of segment:

UN/EDIFACT			Implementace Škoda	
	Name	St Format	St Format	Use / Comment
RFF				
C506	Reference	M	M	
1153	Reference function code qualifier	M an..3	R an..3	Document Type Coded ADF = Treaty number Frame contract number
1154	Reference identifier	C an..35	R an..15	
1156	Document line identifier	C an..6	N	not used
4000	Reference version identifier	C an..35	N	not used
1060	Revision identifier	C an..6	N	not used

Comment:

Example:

RFF+ADF:EN10117306'

**Segment:****UNT**
 Seq. No.: 23 Level: 0
 Status: M Max. Occ.: 1
 Counter:
Message trailer**Name: Message trailer****Description of segment:**

UN/EDIFACT			Implementace Škoda	
	Name	St Format	St Format	Use / Comment
UNT				
0074	Number of segments in the message	M n..6	M n..6	Number of segments in the message (incl. UNH a UNT)
0062	Message reference number	M an..14	M an..14	Message reference number Identical to UNH 0062

Comment:**Example:**

UNT+21+1'



Segment:

UNZ

Seq. No.: 148 Level: 0
 Status: M Max. Occ.: 1
 Counter:

Interchange trailer

Name: Interchange trailer / Závěr výměny

Description of segment:

UN/EDIFACT			Implementace Škoda	
	Name	St Format	St Format	Use / Comment
UNZ				
0036	Interchange control count	M n..6	M n..6	Number of messages in the interchange
0020	Interchange control reference	M an..14	M an..14	Interchange reference number Identical to UNB 0020.

Comment:

Example:

UNZ+1+06844'



Example

UNB+UNOA:2+00013000001VW R3A+O093100000875450XX+120323:0910+06844'
UNH+1+DELJIT:D:97A:UN:CALDSP'
BGM+36::10+0000000121835672'
DTM+137:201203210952:203'
NAD+BY+SKODA::92'
NAD+CZ+00111::92'
NAD+CN+K3+PLANT_NAME1:PLANT_NAME2++PLANT_ADDRESS_STREET+PLANT_ADDRESS_CITY
++123 45+CZ'
SEQ+6'
LIN+1++ 3T9 845 209 AA:BP'
GIR+4+TMBGK61ZT98123456:VV+1234567890:AN+123456789:AP'
PAC+1++002304::92'
DTM+94:20120121:102'
LOC+64+15507::92+NAZEV_SLOZISTE::86'
QTY+52:0:PCE'
QTY+21:1:PCE'
DTM+2:20120420:102'
RFF+ON:9121210476:000001:N'
RFF+CG:1203024'
RFF+ADF:EN10117306'
UNT+21+1'
UNZ+1+00001'



Kontaktní informace

Škoda Auto

Mr Michal Netti

EDI-Support

Web: <http://edi.skoda-auto.cz>

Email: ext.michal.nettl@skoda-auto.cz

Tel: +420 326 837 921

Email: EDI-support@skoda-auto.cz